

Macintosh Driver Installation Inspection Checklist / Installation Overview

Insert the 3.5" PIONEER Macintosh diskette that ships with the Pioneer CD-ROM Drive into the floppy drive of your Macintosh Computer. Double-click on the PIONEER DISKETTE icon. This will bring up the program group "PIONEER" which contains the installation icons as illustrated below:

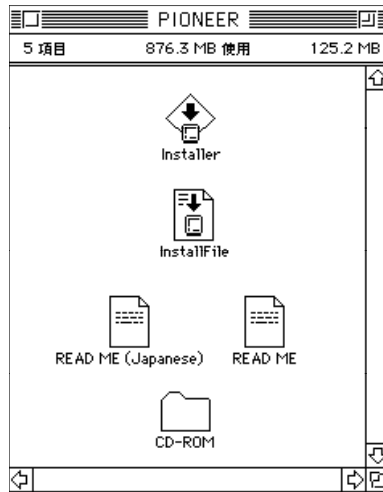


Figure ?? - MACINTOSH - Installation Diskette

NOTE: The CD-ROM Folder contains *CLD Access*, *CLD Remote*, *CLD Remote Read Me*, *Foreign File Access*, and *Apple CD-ROM driver 5.1*. These files must be present on the diskette for a successful installation.

Do not remove or delete any files from this folder.

Double-click on the INSTALLER icon to automatically install the required files. The CD-ROM Folder contains files which are required for a successful installation. DO NOT DELETE THIS FOLDER OR ITS CONTENTS (see note above).

Quick Installation

It is recommended that you make a back up copy of the master PIONEER diskette as soon as you are sure your computer is free of any viruses. Use a disk copying program or make a disk-to-disk copy of the PIONEER diskette by following the instructions in your Macintosh User's Guide. DO NOT drag the items from the PIONEER diskette to another diskette or to the hard drive.

These instructions will guide you as you install the Macintosh Driver for your Pioneer CD-ROM drive. Please be sure to read these instructions carefully and then follow these steps in order:

- Insert the PIONEER Macintosh diskette into the floppy drive of your Macintosh Computer.
- Double-click on the PIONEER DISKETTE icon. You will see a program group called "PIONEER."
- Double-click on the INSTALLER icon to launch installation program.
- When installation is complete, power-down your Macintosh.
- Connect the Pioneer CD-ROM Drive to your Macintosh using a Macintosh SCSI cable. Make sure cable is securely attached.
- Set the SCSI ID number on the back of the CD-ROM Drive to a number between 1 and 6. *Avoid selecting 0 or 3 as the SCSI ID number for the Pioneer Drive.* The internal HDD SCSI ID is preset to 0 and the internal CD-ROM Drive SCSI ID is preset to 3. If the Pioneer Drive SCSI ID is set to 0 or 3 there will be a conflict and the system will NOT work.
- Restart your Macintosh.

Now that setup has been completed, insert a CD-ROM disc into the Pioneer CD-ROM Drive. *CLD Access* will try to mount the CD-ROM disc.

Mounted discs will appear as desktop icons. To open a disc, double-click on the icon that represents the disc you wish to open.

Using the Installer

The installation program is launched by double-clicking on the **INSTALLER** icon in the **PIONEER PROGRAM GROUP**. When launched, the files and drivers that are needed by the Macintosh to communicate with the Pioneer CD-ROM Drive are automatically installed.

NOTE: Some startup documents (INITs) and virus detection programs can affect the installation procedure. We recommend that you temporarily disable all virus programs and move those startup documents which you do not immediately need out of your **SYSTEM FOLDER** before proceeding with the installation program. Once installation is complete, replace the startup documents into **SYSTEM FOLDER**.

When **INSTALLER** is launched, the **INSTALLFILE** dialog box is displayed:

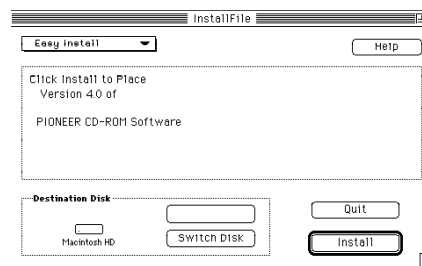


Figure ?? - MACINTOSH -Installer Screen

The **HELP** button provides information on each option. Click on **INSTALL** to begin installation. If you need to install *CLD Access* but not the specific Extensions, select **Custom installation** in the drop down menu at the top of the dialog box. This will change the **EASY INSTALL** screen to the **CUSTOM INSTALL** screen:

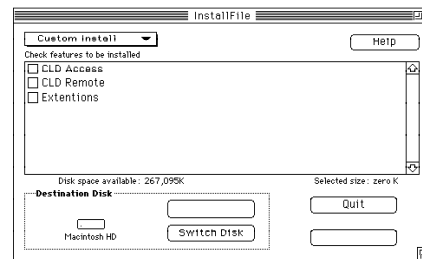


Figure ?? - MACINTOSH - Custom Install Screen

After all files have been copied, an alert box will inform you that the installation was successful:

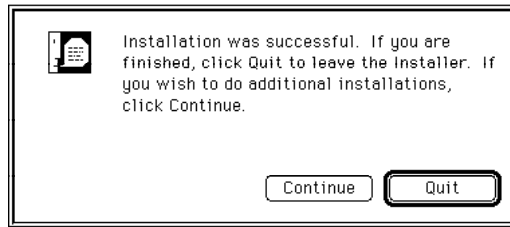


Figure ?? - MACINTOSH - Successful Install Screen

Click on **QUIT** to exit **INSTALLER** and return to the **FINDER**.

NOTE: It is recommended that you move any **INITs** files that were moved from the **SYSTEM FOLDER** back into the **SYSTEM FOLDER** before continuing.

Restart your Macintosh. Any virus protection programs that were temporarily disabled for the installation will no longer be disabled.

Operations Check

Proper installation of *CLD Access* will be indicated by the CD-ROM icon (below) at startup. This icon will **NOT** appear if *CLD Access* has not been installed properly.



If the Drivers are installed properly, but the CD-ROM Drive is not connected to the Macintosh or the unit is powered OFF, you will see this icon at startup:



VERIFY THESE FILES ARE LOADED PROPERLY:

The **CONTROL PANEL FOLDER** should contain the *CLD Access* file and the **EXTENSION FOLDER** should contain the *ISO9660 File Access*, *High Sierra File*

Access, Foreign File Access and Audio CD Access.

Using CLD Access

CLD Access is a device driver used to access any CD-ROM discs under MacOS. *CLD Access* may be launched in two ways: (i) select **Control Panels** from the **APPLE MENU** and double-click on the *CLD Access* icon; or (ii) open **SYSTEM FOLDER**, open **CONTROL PANELS FOLDER**, and double-click on the *CLD Access* icon.

The **CLD ACCESS 4.0** dialog box will open and display the settings, status and menu select command sequences for *CLD Access*.

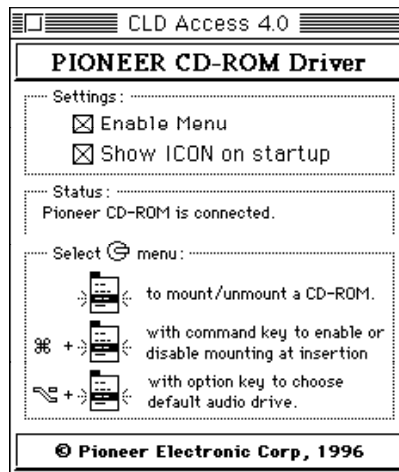


Figure ?? - MACINTOSH - CLD Access Control Panel

Settings:

ENABLE MENU

When selected, the **ENABLE MENU** option displays the **CLD ACCESS MENU** icon (see Figure ??) in the right corner of the Macintosh's top menu bar. If the **CLD ACCESS MENU** icon is not displayed, select the **ENABLE MENU** option and restart your computer. After startup, the icon will appear on the menu bar.

SHOW ICON ON STARTUP

If **SHOW ICON ON STARTUP** is selected, the **CLD ACCESS** icon appears at startup.

Status:

Indicates if the Pioneer Drive is connected (see figure ??). If one or both SETTINGS are changed, STATUS displays an alert that the change is not in effect until restart.

CLD Access Menu

Clicking on the **CLD ACCESS MENU** icon activates a drop-down menu with a list of each disc. Once a disc has been mounted onto the desktop, the volume name of the disc will appear in place of its numerical position name, i.e., DISC 1. (The volume name remains until the *Pioneer CD-ROM Magazine* is ejected.) In the figure below, the volume name of the first disc, *Power Macintosh CD* is displayed indicating it has been mounted onto the desktop.

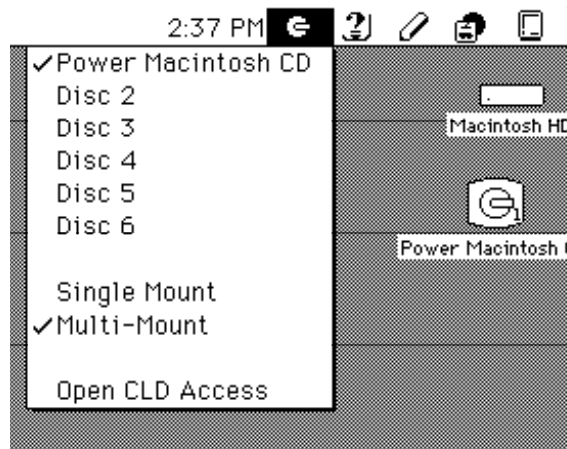


Figure ?? - MACINTOSH - CLD Access Menu

The check mark next to *Power Macintosh* indicates the *Power Macintosh CD* disc is currently mounted. If a *Pioneer CD-ROM Magazine* is not loaded in the drive, all disc names appear as disabled menu selections.

Multi-Mount Option (6-Disc Changers Only)

When **SINGLE MOUNT** option is selected, the drive unmounts the current disc before mounting the next disc. Only one disc icon is displayed on the desktop at one time. The icon name changes to the volume name of the mounted disc.

The **MULTI-MOUNT** option in the **CLD ACCESS MENU** allows you to mount more than one disc to the desktop. Icons are displayed for each disc mounted. Each disc may be activated by double-clicking on its desktop icon.

Auto Mount

To automatically mount more than one disc, first select the **CLD ACCESS MENU** icon and verify that the **MULTI-MOUNT** option is selected. Clicking on the **CLD ACCESS MENU** icon while holding down the **COMMAND-KEY** activates the drop-down menu for **AUTO MOUNT** mode.

NOTE: Discs selected for **AUTO MOUNT** will automatically mount only at *Insert Event* (when a *Pioneer CD-ROM Magazine* is inserted into the drive). If a **MAGAZINE** is already in the drive when discs are selected, they will not automatically mount until the **MAGAZINE** is ejected and reinserted into the drive.

CAUTION: The drop-down menu for the **CLD ACCESS MENU** icon NOT in **AUTO MOUNT** mode looks *almost exactly* like the drop-down menu for the **CLD ACCESS MENU** icon IN **AUTO MOUNT** mode. You can verify if the drop-down menu displayed is for **AUTO MOUNT** mode by the diamond character (◊) next to the discs that have been selected to mount automatically:

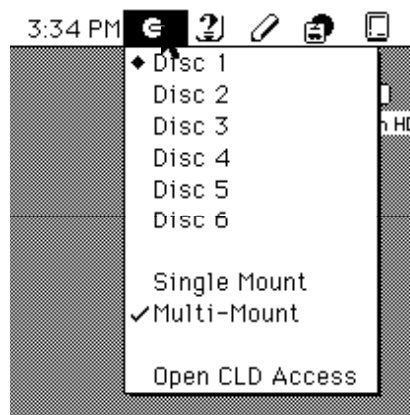


Figure ?? - MACINTOSH - CLD Access Menu with Command-Key

You must enter **CLD ACCESS MENU** in **AUTO MOUNT** mode to select a disc for auto mounting. Each disc of a multiple disc request must be selected individually. To remove a disc from **AUTO MOUNT** mode, enter the menu and select the disc to be removed. **CLD ACCESS will not AUTO MOUNT any discs unless at least one disc (in AUTO MOUNT mode) is**

selected. The initial setting is *DISC 1 selected.* If AUTO MOUNT is changed, the new setting is saved as default.

Writing CD-R Disc (CD-ROM Writer drive only)

If you are using a Pioneer CD-ROM Writer Drive, you may write to a CD-R disc using CD-ROM Writing software. Before writing to the disc, the **CLD ACCESS** functions must be set.

If the disc you wish to write to is already mounted, you must first unmount the disc or it may fail to write.

To **UNMOUNT** a disc that is already mounted:

- Go to Desktop.
- Locate the icon that represents the mounted disc.
- Drag the icon to the Trash.
- The icon is no longer displayed on the desktop. This confirms the disc is not mounted.

You may also confirm a disc is unmounted by selecting the **CLD ACCESS MENU**. Unmounted discs will not have a check mark by their name.

To write to a disc that is **NOT MOUNTED**, complete (in order) the following steps:

- Turn off **AUTO MOUNT** selection for the CD-ROM Writer Drive.
- Write to CD-R disc using writing software.
- Close writing software application.
- Turn on **AUTO MOUNT** selection for the drive.
- To verify the write was successful, mount the CD-R disc. The write is considered successful if the disc can be read.

APPENDIX A Connect to Macintosh

Below is a diagram of how a Pioneer CD-ROM Drive is connected to a system with SCSI devices already attached (Diagram ??).

The following steps when taken in order will guide you in connecting two Pioneer CD-ROM Drives to a Macintosh. *Before you connect any SCSI device or extended SCSI board, please refer to the manual accompanying the device or board for instructions:*

- Connect the first Pioneer CD-ROM Drive to the Hard Disk and to the Macintosh original SCSI port.
- Verify the HDD SCSI ID is 5 and Terminator is ON. Verify the SCSI ID for the CD-ROM Drive is 2 and Terminator is OFF.
- Connect the second Pioneer CD-ROM Drive to the extended SCSI board port located on the back of the Macintosh.
- Verify the SCSI ID for the Drive is 3 and Terminator is ON.

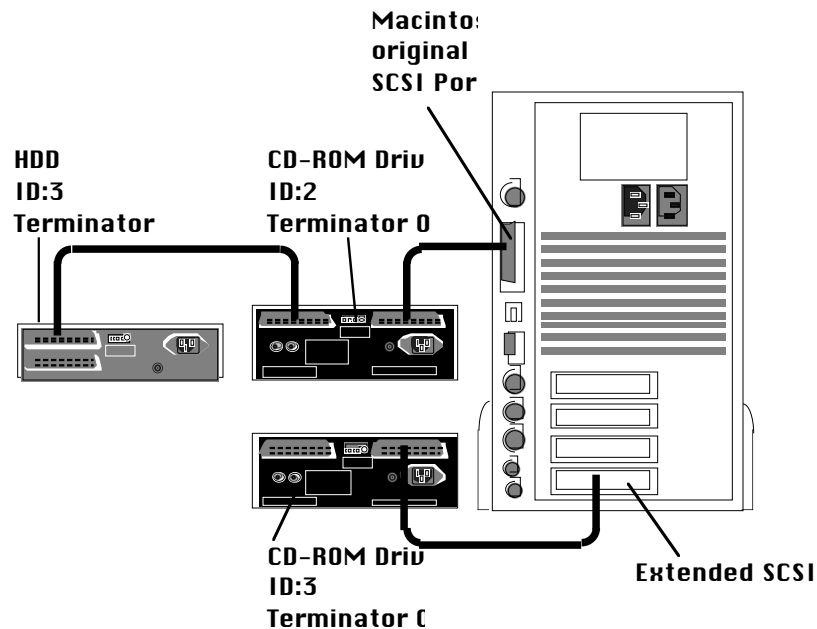


Diagram ?? - Pioneer CD-ROM Drive connected to a Macintosh